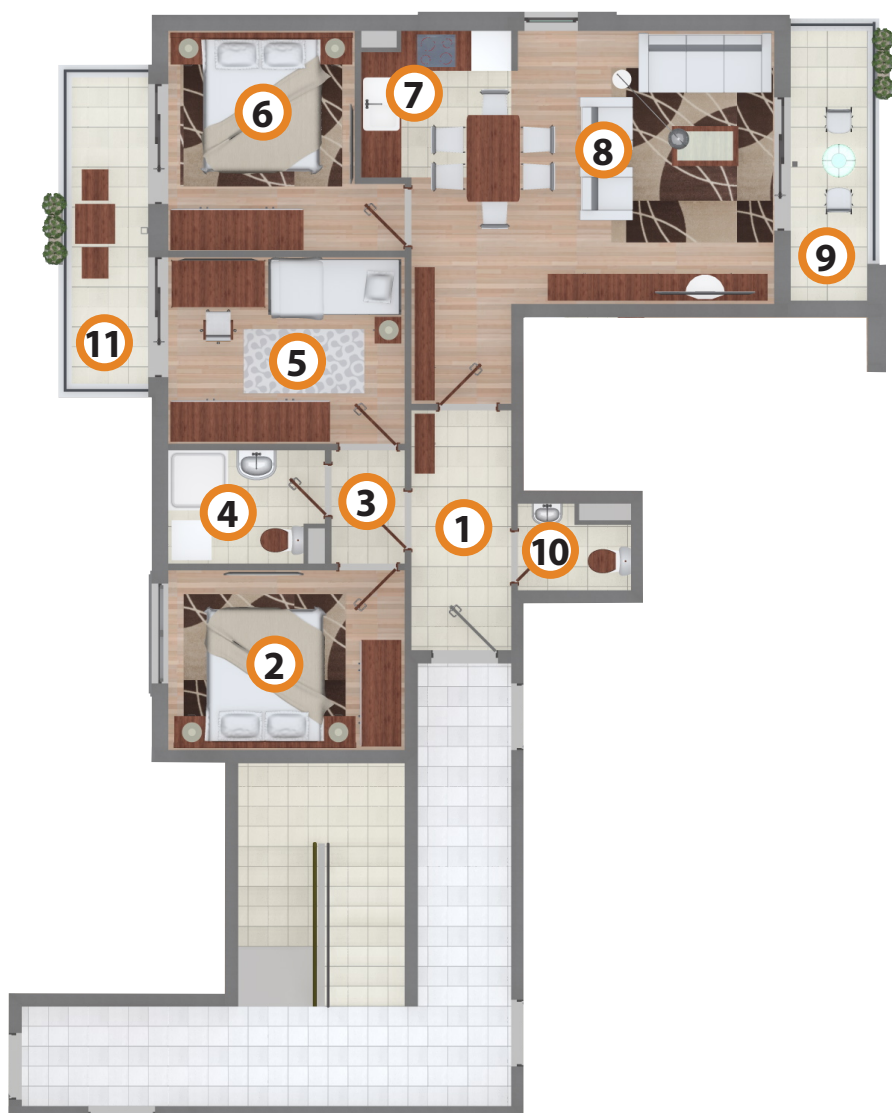




## STAN 10-III

### POVRŠINA

**78,47 m<sup>2</sup>**



- ① HODNIK 1 – 5,40 m<sup>2</sup>
- ② SPAVAĆA SOBA 1 – 9,59 m<sup>2</sup>
- ③ HODNIK 2 – 1,87 m<sup>2</sup>
- ④ KUPATILO – 3,80 m<sup>2</sup>
- ⑤ SPAVAĆA SOBA 2 – 9,94 m<sup>2</sup>
- ⑥ SPAVAĆA SOBA 3 – 9,99 m<sup>2</sup>
- ⑦ KUHINJA – 4,76 m<sup>2</sup>
- ⑧ DNEVNA SOBA SA TRPEZARIJOM – 21,23 m<sup>2</sup>
- ⑨ TERASA 1 – 4,66 m<sup>2</sup>
- ⑩ TOALET – 1,94 m<sup>2</sup>
- ⑪ TERASA 2 – 5,29 m<sup>2</sup>

DISPOZICIJA STANA 10-III

